

# ICP-OES/ICP-MS SUPPLIES & ACCESSORIES

Issue 9

## Product List for Thermo ICP-MS: X Series



**GLASS EXPANSION**  
Quality By Design

### INTERNATIONAL

15 Batman Street  
West Melbourne  
Vic 3003, Australia

Telephone: +61 3 9320 1111  
Facsimile: +61 3 9320 1112  
Email: [enquiries@geicp.com](mailto:enquiries@geicp.com)

### AMERICAS

4 Barlows Landing Road, Unit 2A  
Pocasset, MA 02559, USA

Toll Free Phone: 800 208 0097  
Telephone: 508 563 1800  
Facsimile: 508 563 1802  
Email: [geusa@geicp.com](mailto:geusa@geicp.com)

# Thermo ICP-MS: X Series

## Glass Nebulizers

### SeaSpray

400µL/min uptake [ARG-1-USS04](#)

### MicroMist

400µL/min uptake [ARG-1-UM04](#)

200µL/min uptake [ARG-1-UM02](#)

100µL/min uptake [ARG-1-UM01](#)

50µL/min uptake [ARG-1-UM005](#)



## Nebulizers suitable for use with HF

### OpalMist

400µL/min uptake [ARG-1-PFA04](#)

200µL/min uptake [ARG-1-PFA02](#)

100µL/min uptake [ARG-1-PFA01](#)

50µL/min uptake [ARG-1-PFA005](#)



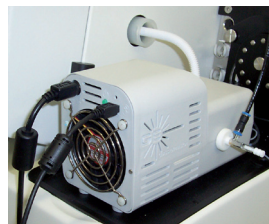
## IsoMist

### IsoMist Programmable Temperature Spray Chamber for Thermo X Series

With glass spray chamber [KT-1025](#)

With quartz spray chamber [KT-1025Q](#)

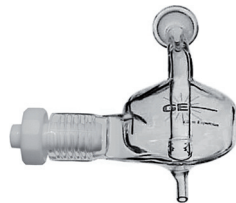
With PFA spray chamber [KT-1025P](#)



## Spray Chambers

### Twister

50mL Cyclonic [20-809-0293HE](#)



### Twinnabar

20mL Cyclonic [20-809-0536HE](#)

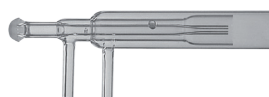


## Torches

### Fixed Torch (Quartz One Piece)

Quartz Torch with 1.5mm Injector [30-808-1279](#)

Quartz Torch with 2.0mm Injector [30-807-0532](#)



## Torches (continued)

### Semi Demountable Torch (HF)

[30-808-0998](#)

#### Comprises:

X-Series Semi Demountable Torch Body [31-808-1009](#)

X-Series Semi Demountable Torch Adaptor [31-808-0984](#)

Tapered Alumina Injector 1.5mm [31-808-1013](#)

GazFit Connectors (PKT 4) [GAZ-06](#)



### Injector Options

Tapered Alumina Injector 1.5mm [31-808-1013](#)

Platinum Injector 1.5mm [31-808-1256](#)

Sapphire Injector 2.0mm [31-808-3001](#)

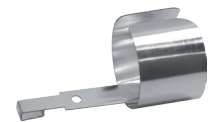


### Other Products

Quartz Bonnet [31-808-2831](#)



Silver Screen [TG5003](#)



## Cones

### Nickel Sampler, Copper Core

(Thermo p/n 3600812) [TG1021-Ni/Cu](#)



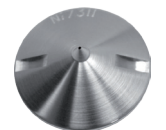
### Nickel Skimmer, Xi, Xt

(Thermo p/n 3600811) [TG1022-Ni](#)



### Nickel Skimmer, Xs

(Thermo p/n 3200860) [TG1004-Ni](#)



### Skimmer Interface

(Thermo p/n 3600813) [TG1023-Cu](#)



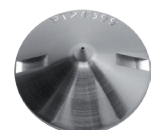
### Skimmer Interface, X Series II

(Thermo p/n 3601320) [TG1023-Ni](#)



### Platinum Micro-Skimmer Cone, Xs, Copper Core

(Thermo p/n 3201101) [TG1008-Pt](#)



Cones (continued)

**Platinum Sampler Cone, X Series,  
Copper Core**

(Thermo p/n 3601289)

[TG1026A-Pt/Cu](#)



ConeGuard Thread Protectors

**ConeGuard, Micro-Skimmer for X  
Series**

[70-803-1028](#)

